

\$559,707 - 300 Foxtail Way, Sherwood Park

MLS® #E4465770

\$559,707

4 Bedroom, 3.00 Bathroom, 1,374 sqft
Single Family on 0.00 Acres

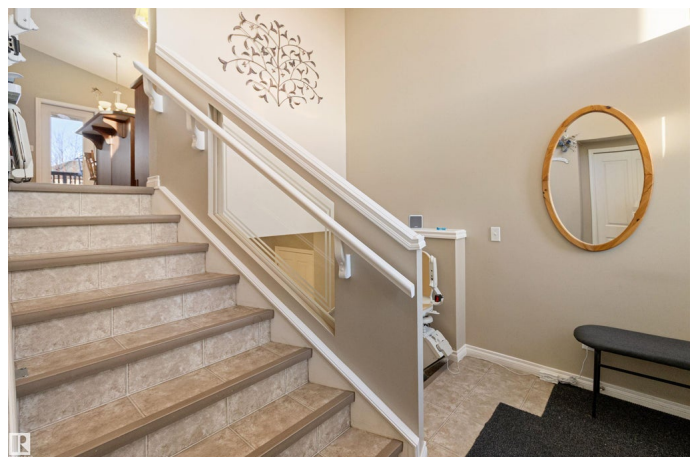
Foxboro, Sherwood Park, AB

INCREDIBLE BACKYARD! HUGE PIE LOT!
This cheery and bright bi-level is located in a cul-de-sac in family-friendly Foxboro! Immaculately maintained with 2283 square feet of total living space! Featuring an open concept with a generous entry way, vaulted ceilings in the living room and a big eat-in kitchen. Total of 4 bedrooms and 3 bathrooms. The upper level has the Primary Bedroom with walk-in closet and beautiful ensuite. The lower level offers a large family room, 4th bedroom, 4-piece bathroom, storage space, and a laundry room with a newer sink. **UPGRADES INCLUDE: NEW SHINGLES (2024), 2 solar tubes in kitchen (2017), NEW fridge & dishwasher (2024), NEW kitchen garden doors (2023), new motor in furnace (2022), new sink in laundry room, and newly painted fence (2024).** Oversized double attached garage, central Air-Conditioning and an amazing backyard! Close to parks and walking trails. This lovely home is ready for your family to move in and enjoy! Visit REALTOR® website for more information.

Built in 2008

Essential Information

MLS® #	E4465770
Price	\$559,707



Bedrooms	4
Bathrooms	3.00
Full Baths	3
Square Footage	1,374
Acres	0.00
Year Built	2008
Type	Single Family
Sub-Type	Detached Single Family
Style	Bi-Level
Status	Active

Community Information

Address	300 Foxtail Way
Area	Sherwood Park
Subdivision	Foxboro
City	Sherwood Park
County	ALBERTA
Province	AB
Postal Code	T8A 3H6

Amenities

Amenities	See Remarks
Parking	220 Volt Wiring, Double Garage Attached, Heated, Over Sized

Interior

Interior Features	ensuite bathroom
Appliances	Air Conditioning-Central, Dishwasher-Built-In, Dryer, Fan-Ceiling, Microwave Hood Fan, Refrigerator, Storage Shed, Stove-Electric, Washer, See Remarks, Curtains and Blinds
Heating	Forced Air-1, Natural Gas
Stories	2
Has Basement	Yes
Basement	Full, Finished

Exterior

Exterior	Wood, Vinyl
Exterior Features	Cul-De-Sac, Fenced, Landscaped, Playground Nearby, Public Transportation, Schools, Shopping Nearby
Roof	Asphalt Shingles

Construction Wood, Vinyl
Foundation Concrete Perimeter

Additional Information

Date Listed November 13th, 2025
Days on Market 3
Zoning Zone 25

DATA IS DEEMED RELIABLE BUT IS NOT GUARANTEED ACCURATE BY THE REALTORS® ASSOCIATION OF EDMONTON. COPYRIGHT 2025 BY THE REALTORS® ASSOCIATION OF EDMONTON. ALL RIGHTS RESERVED. Trademarks are owned or controlled by the Canadian Real Estate Association (CREA) and identify real estate professionals who are members of CREA (REALTOR®, REALTORS®) and/or the quality of services they provide (MLS®, Multiple Listing Service®)

Listing information last updated on November 16th, 2025 at 8:32am MST