

# \$779,000 - 41 Birkshire Crescent, Sherwood Park

MLS® #E4464604

**\$779,000**

3 Bedroom, 3.00 Bathroom, 2,364 sqft  
Single Family on 0.00 Acres

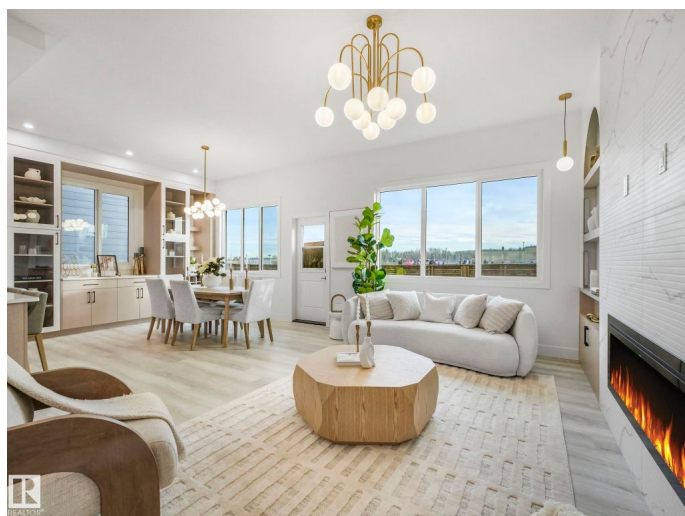
Hillshire, Sherwood Park, AB

Just under 2,400 sq. ft., this modern yet timeless home offers the perfect blend of style, comfort, and functionality. The traditional floor plan creates a warm, inviting flow throughout, while the chef's kitchen features full stainless steel appliances, custom cabinetry with feature lighting, and a paneled fridge for a seamless, high-end finish. Upstairs, a spacious bonus room provides the perfect family retreat. The primary bedroom overlooks peaceful green space in the sought-after Hillshire community. This home combines elevated design with everyday livability—ideal for those who want sophistication without sacrificing comfort. Walking distance to parks, shopping and school this is the perfect family home.

Built in 2025

## Essential Information

MLS® #	E4464604
Price	\$779,000
Bedrooms	3
Bathrooms	3.00
Full Baths	3
Square Footage	2,364
Acres	0.00
Year Built	2025



Type	Single Family
Sub-Type	Detached Single Family
Style	2 Storey
Status	Active

### **Community Information**

Address	41 Birkshire Crescent
Area	Sherwood Park
Subdivision	Hillshire
City	Sherwood Park
County	ALBERTA
Province	AB
Postal Code	T8B 0C7

### **Amenities**

Amenities	See Remarks
Parking	Double Garage Attached

### **Interior**

Interior Features	ensuite bathroom
Appliances	See Remarks
Heating	Forced Air-2, Natural Gas
Fireplace	Yes
Fireplaces	Insert
Stories	2
Has Basement	Yes
Basement	Full, Unfinished

### **Exterior**

Exterior	Wood, Stone, Hardie Board Siding
Exterior Features	Backs Onto Park/Trees, Schools, Shopping Nearby, See Remarks, Partially Fenced
Roof	Asphalt Shingles
Construction	Wood, Stone, Hardie Board Siding
Foundation	Slab

### **Additional Information**

Date Listed	November 3rd, 2025
Days on Market	6

## Zoning

## Zone 25

DATA IS DEEMED RELIABLE BUT IS NOT GUARANTEED ACCURATE BY THE REALTORS® ASSOCIATION OF EDMONTON. COPYRIGHT 2025 BY THE REALTORS® ASSOCIATION OF EDMONTON. ALL RIGHTS RESERVED. Trademarks are owned or controlled by the Canadian Real Estate Association (CREA) and identify real estate professionals who are members of CREA (REALTOR®, REALTORS®) and/or the quality of services they provide (MLS®, Multiple Listing Service®)

Listing information last updated on November 9th, 2025 at 3:17am MST