

\$127,500 - 415 5520 Riverbend Road, Edmonton

MLS® #E4461880

\$127,500

2 Bedroom, 2.00 Bathroom, 1,167 sqft

Condo / Townhouse on 0.00 Acres

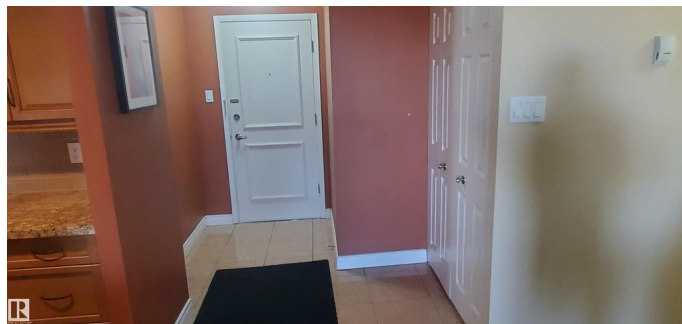
Brander Gardens, Edmonton, AB

WOWSA This 1160 Square Foot Penthouse end unit, 2 Bedroom, 2 Bathroom Condo in Essex House sits in a great Riverbend Location. Some of the features and upgrades of the building and condo include; AN INCREDIBLE VIEW OF THE CITY AND RIVER VALLEY, two very large bedrooms with the Primary Bedroom having a Large 3 piece ensuite, double closet and storage closet, Spacious Living Room with Dining area, Breakfast Nook and a Walkout onto a Large 5â€™x21â€™ deck! The Gorgeous high end Kitchen Craft Kitchen is SO SO NICE that must be seen with newer appliances Large storage room, energized covered parking and a Great 4th Floor location with the Laundry area next door! This spotless Building features a Swimming Pool, Hot Tub and Sauna, Party/Hospitality Room and a Workout Room. The Grounds are Spotless in this 18+ Building and it Shows Spotless! CONDO FEES INCLUDE: POWER, WATER, HEAT & CABLE/INTERNET

Built in 1976

Essential Information

MLS® #	E4461880
Price	\$127,500
Bedrooms	2



Bathrooms	2.00
Full Baths	2
Square Footage	1,167
Acres	0.00
Year Built	1976
Type	Condo / Townhouse
Sub-Type	Lowrise Apartment
Style	Single Level Apartment
Status	Active

Community Information

Address	415 5520 Riverbend Road
Area	Edmonton
Subdivision	Brander Gardens
City	Edmonton
County	ALBERTA
Province	AB
Postal Code	T6H 5G9

Amenities

Amenities	Deck, Exercise Room, Guest Suite, Hot Tub, Intercom, No Animal Home, No Smoking Home, Parking-Plug-Ins, Party Room, Pool-Indoor, Recreation Room/Centre, Sauna; Swirlpool; Steam, Security Door, Social Rooms, Storage-In-Suite, Television Connection, Vinyl Windows, See Remarks
Parking	Single Carport
Has Pool	Yes

Interior

Interior Features	ensuite bathroom
Appliances	Dishwasher-Built-In, Microwave Hood Fan, Refrigerator, Stove-Electric
Heating	Baseboard, Hot Water, Natural Gas
# of Stories	4
Stories	1
Has Basement	Yes
Basement	None, No Basement

Exterior

Exterior	Wood, Metal, Stucco
----------	---------------------

Exterior Features	Corner Lot, Flat Site, Fruit Trees/Shrubs, Landscaped, No Through Road, Treed Lot, View Downtown, See Remarks
Roof	Roll Roofing
Construction	Wood, Metal, Stucco
Foundation	Concrete Perimeter

Additional Information

Date Listed	October 10th, 2025
Days on Market	3
Zoning	Zone 14
Condo Fee	\$837

DATA IS DEEMED RELIABLE BUT IS NOT GUARANTEED ACCURATE BY THE REALTORS® ASSOCIATION OF EDMONTON. COPYRIGHT 2025 BY THE REALTORS® ASSOCIATION OF EDMONTON. ALL RIGHTS RESERVED.Trademarks are owned or controlled by the Canadian Real Estate Association (CREA) and identify real estate professionals who are members of CREA (REALTOR®, REALTORS®) and/or the quality of services they provide (MLS®, Multiple Listing Service®)

Listing information last updated on October 13th, 2025 at 5:47pm MDT