

\$290,500 - 18 13838 166 Avenue, Edmonton

MLS® #E4454761

\$290,500

3 Bedroom, 1.50 Bathroom, 1,055 sqft
Condo / Townhouse on 0.00 Acres

Carlton, Edmonton, AB

Welcome to this well-kept end-unit townhouse in Upper Carlton. Offering 3 comfortable bedrooms, a convenient half bath on the main floor, and a full bath upstairs, this home is designed for both function and comfort. The attached garage comes equipped with 220V wiring and a brand-new opener featuring myQ technology, allowing you to open it from anywhere and enjoy Amazon Key delivery access. Inside, recent upgrades include a modern microwave, stove, and fridge, as well as stylish vinyl plank flooring on the staircase and upper level. The spacious front entry with a built-in bench adds charm and practicality. For parking, you'll appreciate the driveway, visitor stalls, and the attached garage. Perfectly located close to Albany Square and surrounded by multiple school options, this townhouse offers convenience, updates, and great community living.



Built in 2013

Essential Information

MLS® #	E4454761
Price	\$290,500
Bedrooms	3
Bathrooms	1.50
Full Baths	1
Half Baths	1

Square Footage 1,055
 Acres 0.00
 Year Built 2013
 Type Condo / Townhouse
 Sub-Type Townhouse
 Style 2 Storey
 Status Active

Community Information

Address 18 13838 166 Avenue
 Area Edmonton
 Subdivision Carlton
 City Edmonton
 County ALBERTA
 Province AB
 Postal Code T6V 0K3

Amenities

Amenities Air Conditioner, Carbon Monoxide Detector, Dishwasher, Electric Range, Hardwood Floors, In-Unit Laundry, Pet-Friendly, Smoke Detector, Stainless Steel Appliances, Walk-In Closet, Walk-In Pantry
 Parking 220 Volt Wiring, Single Garage

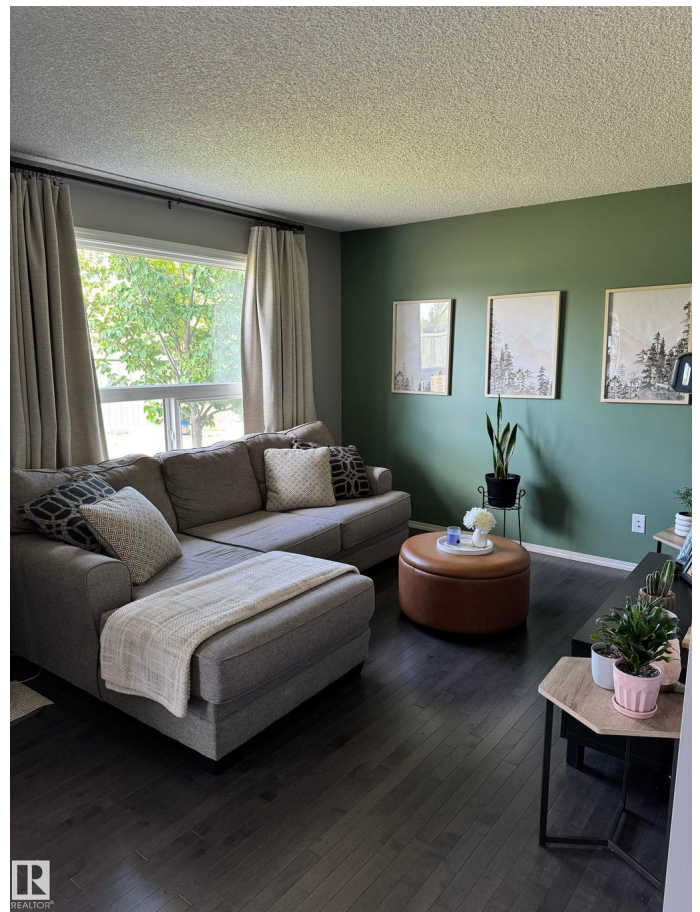
Interior

Appliances Air Conditioning-Central, Dishwasher, Electric Range, Microwave Hood Fan, Refrigerator, Stainless Steel Appliances, Walk-In Pantry
 Heating Forced Air-1, Natural Gas
 Stories 2
 Has Basement Yes
 Basement Full, Unfinished

Exterior

Exterior Wood, Stone, Vinyl
 Exterior Features Landscaped, Low Maintenance, Walk-In Pantry, Walk-In Closet, Walk-In Pantry, Walk-In Closet, Walk-In Pantry
 Roof Asphalt Shingles
 Construction Wood, Stone, Vinyl
 Foundation Concrete Perimeter

Additional Information



Date Listed	August 26th, 2025
Days on Market	10
Zoning	Zone 27
Condo Fee	\$345

DATA IS DEEMED RELIABLE BUT IS NOT GUARANTEED ACCURATE BY THE REALTORS® ASSOCIATION OF EDMONTON. COPYRIGHT 2025 BY THE REALTORS® ASSOCIATION OF EDMONTON. ALL RIGHTS RESERVED. Trademarks are owned or controlled by the Canadian Real Estate Association (CREA) and identify real estate professionals who are members of CREA (REALTOR®, REALTORS®) and/or the quality of services they provide (MLS®, Multiple Listing Service®)

Listing information last updated on September 5th, 2025 at 3:17pm MDT