

\$350,000 - 55 1010 Millbourne, Edmonton

MLS® #E4447465

\$350,000

3 Bedroom, 2.50 Bathroom, 1,577 sqft

Condo / Townhouse on 0.00 Acres

Michaels Park, Edmonton, AB

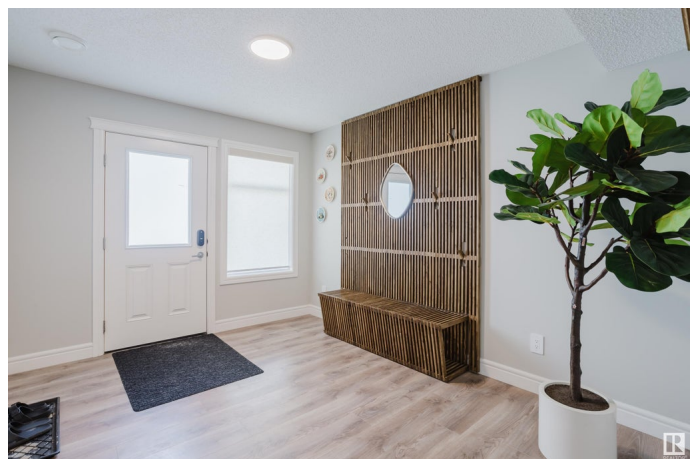
Beautifully designed 3-bedroom + den stacked townhome offers an ideal blend of style, comfort & functionality. The lower level features a single attached garage, large storage area, & versatile den—perfect for a home office, gym, or guest space. On main floor, you'll find a thoughtfully laid-out kitchen with sleek quartz countertops, walk-in pantry, SS appliances & open-concept living/dining area that's perfect for entertaining. Step out onto your private deck, ideal for summer BBQs. Convenient 2-piece powder room & separate laundry room add to the everyday ease. Upstairs, 2 spacious bedrooms share a 4-piece bath, while the expansive primary bedroom boasts a walk-in closet & spa-inspired ensuite. Located in the heart of Michael's Park, this home blends modern living with a quiet, established neighbourhood vibe. Close to shopping, schools, access to the Whitemud & LRT. Home includes Google Start Thermostat, auto-lock, ring doorbell, electric fireplace, tinted windows on main floor & built in coffee bar.

Built in 2023

Essential Information

MLS® # E4447465

Price \$350,000



Bedrooms	3
Bathrooms	2.50
Full Baths	2
Half Baths	1
Square Footage	1,577
Acres	0.00
Year Built	2023
Type	Condo / Townhouse
Sub-Type	Townhouse
Style	3 Storey
Status	Active

Community Information

Address	55 1010 Millbourne
Area	Edmonton
Subdivision	Michaels Park
City	Edmonton
County	ALBERTA
Province	AB
Postal Code	T6K 1M7

Amenities

Amenities	Deck, No Smoking Home, See Remarks, Natural Gas BBQ Hookup
Parking	Single Garage Attached

Interior

Interior Features	ensuite bathroom
Appliances	Dishwasher-Built-In, Garage Control, Refrigerator, Stacked Washer/Dryer, Window Coverings, See Remarks
Heating	Forced Air-1, Natural Gas
Stories	3
Has Basement	Yes
Basement	None, No Basement

Exterior

Exterior	Wood, Stone, Vinyl
Exterior Features	Golf Nearby, Picnic Area, Playground Nearby, Public Transportation, Schools, Shopping Nearby, See Remarks
Roof	Asphalt Shingles

Construction	Wood, Stone, Vinyl
Foundation	Concrete Perimeter

Additional Information

Date Listed	July 12th, 2025
Days on Market	1
Zoning	Zone 29
Condo Fee	\$188

DATA IS DEEMED RELIABLE BUT IS NOT GUARANTEED ACCURATE BY THE REALTORS® ASSOCIATION OF EDMONTON. COPYRIGHT 2025 BY THE REALTORS® ASSOCIATION OF EDMONTON. ALL RIGHTS RESERVED.Trademarks are owned or controlled by the Canadian Real Estate Association (CREA) and identify real estate professionals who are members of CREA (REALTOR®, REALTORS®) and/or the quality of services they provide (MLS®, Multiple Listing Service®)

Listing information last updated on July 13th, 2025 at 8:17pm MDT