

\$499,900 - 24 Napoleon Crescent, St. Albert

MLS® #E4443508

\$499,900

3 Bedroom, 2.50 Bathroom, 1,523 sqft

Single Family on 0.00 Acres

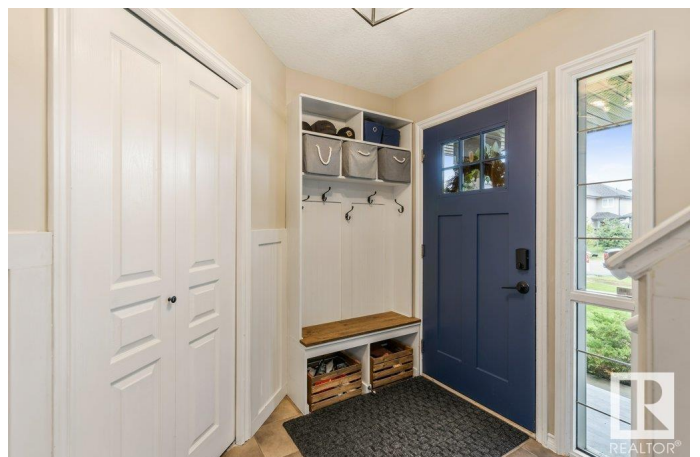
North Ridge, St. Albert, AB

The 2-storey family home in North Ridge that you've been looking for! Just steps to parks, trails & schools. This updated home offers an open-concept functional floorplan. The great room has a cozy gas fireplace and views into your southern exposure yard. The updated kitchen features a center island, quartz countertops, corner pantry, modern lighting & hardware, plus a spacious dining nook w/ access to the fully fenced, landscaped yard & interlocking stone patio. A half bath and main floor laundry completes this floor. Upstairs you'll find a main 4-pc bath and 3 generous bedrooms, including the primary suite w/ dual closets & spa-like ensuite w/ soaker tub & separate shower. The fully finished basement adds a large rec room with electric fireplace, ideal for a kidsâ€™™ zone, home gym or movie space, plus ample storage. Updates include A/C, flow-through humidifier, garage heater (2024) & roof (2025). A beautifully maintained home in a family-friendly location!

Built in 2007

Essential Information

MLS® #	E4443508
Price	\$499,900
Bedrooms	3
Bathrooms	2.50



Full Baths	2
Half Baths	1
Square Footage	1,523
Acres	0.00
Year Built	2007
Type	Single Family
Sub-Type	Detached Single Family
Style	2 Storey
Status	Active

Community Information

Address	24 Napoleon Crescent
Area	St. Albert
Subdivision	North Ridge
City	St. Albert
County	ALBERTA
Province	AB
Postal Code	T8N 1C6

Amenities

Amenities	Air Conditioner, Deck, Patio, See Remarks
Parking	Double Garage Attached

Interior

Interior Features	ensuite bathroom
Appliances	Air Conditioning-Central, Dishwasher-Built-In, Dryer, Microwave Hood Fan, Refrigerator, Stove-Electric, Washer, Window Coverings
Heating	Forced Air-1, Natural Gas
Fireplace	Yes
Fireplaces	Mantel, Tile Surround
Stories	3
Has Basement	Yes
Basement	Full, Finished

Exterior

Exterior	Wood, Brick, Vinyl
Exterior Features	Fenced, Golf Nearby, Landscaped, Playground Nearby, Public Transportation, Schools, Shopping Nearby, See Remarks
Roof	Asphalt Shingles

Construction	Wood, Brick, Vinyl
Foundation	Concrete Perimeter

Additional Information

Date Listed	June 20th, 2025
Days on Market	11
Zoning	Zone 24

DATA IS DEEMED RELIABLE BUT IS NOT GUARANTEED ACCURATE BY THE REALTORS® ASSOCIATION OF EDMONTON. COPYRIGHT 2025 BY THE REALTORS® ASSOCIATION OF EDMONTON. ALL RIGHTS RESERVED.Trademarks are owned or controlled by the Canadian Real Estate Association (CREA) and identify real estate professionals who are members of CREA (REALTOR®, REALTORS®) and/or the quality of services they provide (MLS®, Multiple Listing Service®)

Listing information last updated on July 1st, 2025 at 6:47pm MDT