

## \$335,000 - 11080 Ellerslie Road, Edmonton

MLS® #E4442152

**\$335,000**

2 Bedroom, 2.00 Bathroom, 861 sqft

Condo / Townhouse on 0.00 Acres

Richford, Edmonton, AB

ELEVATED ELEGANCE AT Eâ€™SCAPES  
â€™ Enjoy spectacular west-facing sunsets from your own massive private balcony and ROOFTOP PATIO, with access from both bedrooms and the great room. This stunning 2 bed, 2 bath condo offers upscale finishes and TEN FOOT ceilings, thanks to its top floor location. The kitchen is a CHEF'S DREAM with quartz counters, gas range, full-height soft-close cabinets, stainless steel appliances, and a built-in pantry. Cork flooring, designer lighting, and Hunter Douglas roller shades add style, while CONCRETE construction ensures soundproofing. The spacious layout features a bright living area, two baths, central AIRCONDITIONING, in-suite laundry, and underground parking with storage. AMENITIES include a guest suite, fitness centre, lounge with kitchen and billiards, and two rooftop terraces. Walk to restaurants, groceries, and all daily conveniences, with easy access to Calgary Trail and the Henday. Minutes to the airport!

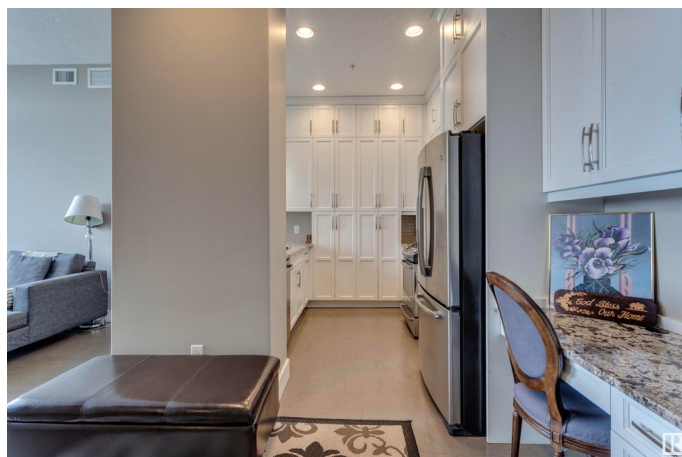
Built in 2014

### Essential Information

MLS® # E4442152

Price \$335,000

Bedrooms 2



Bathrooms	2.00
Full Baths	2
Square Footage	861
Acres	0.00
Year Built	2014
Type	Condo / Townhouse
Sub-Type	Lowrise Apartment
Style	Single Level Apartment
Status	Active

### Community Information

Address	11080 Ellerslie Road
Area	Edmonton
Subdivision	Richford
City	Edmonton
County	ALBERTA
Province	AB
Postal Code	T6W 2C2

### Amenities

Amenities	Air Conditioner, Ceiling 10 ft., Exercise Room, No Animal Home, No Smoking Home, Secured Parking, Security Door, Social Rooms, Rooftop Deck/Patio
Parking	Underground

### Interior

Interior Features	ensuite bathroom
Appliances	Dishwasher-Built-In, Dryer, Garburator, Microwave Hood Fan, Refrigerator, Stove-Gas, Washer, Window Coverings
Heating	Forced Air-1, Natural Gas
# of Stories	6
Stories	1
Has Basement	Yes
Basement	None, No Basement

### Exterior

Exterior	Concrete, Stucco
Exterior Features	Airport Nearby, Flat Site, Golf Nearby
Roof	Tar & Gravel

Construction	Concrete, Stucco
Foundation	Concrete Perimeter

**Additional Information**

Date Listed	June 10th, 2025
Days on Market	6
Zoning	Zone 55
Condo Fee	\$556

DATA IS DEEMED RELIABLE BUT IS NOT GUARANTEED ACCURATE BY THE REALTORS® ASSOCIATION OF EDMONTON. COPYRIGHT 2025 BY THE REALTORS® ASSOCIATION OF EDMONTON. ALL RIGHTS RESERVED.Trademarks are owned or controlled by the Canadian Real Estate Association (CREA) and identify real estate professionals who are members of CREA (REALTOR®, REALTORS®) and/or the quality of services they provide (MLS®, Multiple Listing Service®)

Listing information last updated on June 15th, 2025 at 11:17pm MDT