

\$449,900 - 2126 Maple Road, Edmonton

MLS® #E4441928

\$449,900

3 Bedroom, 2.50 Bathroom, 1,436 sqft

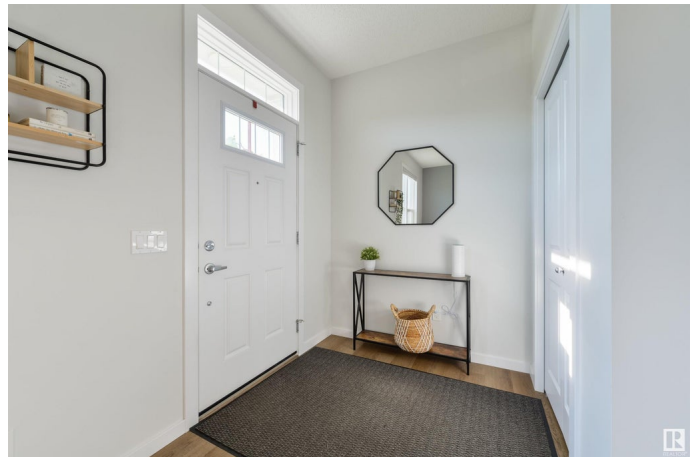
Single Family on 0.00 Acres

Maple Crest, Edmonton, AB

PERFECT FAMILY HOME in MAPLE CREST w/ 1436 sq.ft of developed living space, featuring 3 BEDS, 2.5 BATHS, a DETACHED DOUBLE GARAGE, a SEPARATE ENTRANCE for future basement suite development, & a FULLY FENCED BACKYARD. The main floor features a large kitchen w/ UPGRADED STAINLESS STEEL APPLIANCES + SOFT CLOSE CABINETS + a WALK-IN PANTRY + BREAKFAST NOOK, a COZY LIVING ROOM w/LARGE WINDOWS that let in plenty of natural light, a SPACIOUS DINING AREA, & a 2.5pc BATH. Upstairs you'll find the PRIMARY BEDROOM w/ WALK-IN CLOSET + 4pc ENSUITE, TWO SPARE ROOMS, a second 4pc BATH, & UPSTAIRS LAUNDRY w/ STORAGE SPACE. The basement is UNFINISHED w/ again, a SEPARATE ENTRANCE for future basement suite development. Located close to all the amenities you can think of including, but not limited to: RESTAURANTS, MOVIE THEATRES, CAFES, BANKS, GROCERY STORES, SCHOOLS, SHOPPING, PUBLIC TRANSIT, WALKING TRAILS, & THE MEADOWS COMMUNITY RECREATION CENTRE. Easy access to the WHITEMUD & ANTHONY HENDAY.

Built in 2020

Essential Information



| | |
|----------------|---------------|
| MLS® # | E4441928 |
| Price | \$449,900 |
| Bedrooms | 3 |
| Bathrooms | 2.50 |
| Full Baths | 2 |
| Half Baths | 1 |
| Square Footage | 1,436 |
| Acres | 0.00 |
| Year Built | 2020 |
| Type | Single Family |
| Sub-Type | Half Duplex |
| Style | 2 Storey |
| Status | Active |

Community Information

| | |
|-------------|-----------------|
| Address | 2126 Maple Road |
| Area | Edmonton |
| Subdivision | Maple Crest |
| City | Edmonton |
| County | ALBERTA |
| Province | AB |
| Postal Code | T6T 2L6 |

Amenities

| | |
|-----------|---|
| Amenities | On Street Parking, Deck, Detectors Smoke, No Smoking Home, HRV System, Natural Gas BBQ Hookup |
| Parking | Double Garage Detached |

Interior

| | |
|-------------------|--|
| Interior Features | ensuite bathroom |
| Appliances | Dishwasher-Built-In, Dryer, Microwave Hood Fan, Refrigerator, Stove-Electric, Washer, Window Coverings |
| Heating | Forced Air-1, Natural Gas |
| Stories | 2 |
| Has Basement | Yes |
| Basement | Full, Unfinished |

Exterior

| | |
|----------|-------------|
| Exterior | Wood, Vinyl |
|----------|-------------|

| | |
|-------------------|--|
| Exterior Features | Back Lane, Fenced, Golf Nearby, Landscaped, Low Maintenance Landscape, Paved Lane, Playground Nearby, Public Transportation, Schools, Shopping Nearby, See Remarks |
| Roof | Asphalt Shingles |
| Construction | Wood, Vinyl |
| Foundation | Concrete Perimeter |

Additional Information

| | |
|----------------|-----------------|
| Date Listed | June 12th, 2025 |
| Days on Market | 3 |
| Zoning | Zone 30 |

DATA IS DEEMED RELIABLE BUT IS NOT GUARANTEED ACCURATE BY THE REALTORS® ASSOCIATION OF EDMONTON. COPYRIGHT 2025 BY THE REALTORS® ASSOCIATION OF EDMONTON. ALL RIGHTS RESERVED.Trademarks are owned or controlled by the Canadian Real Estate Association (CREA) and identify real estate professionals who are members of CREA (REALTOR®, REALTORS®) and/or the quality of services they provide (MLS®, Multiple Listing Service®)

Listing information last updated on June 15th, 2025 at 7:32pm MDT