

## \$599,900 - 8438 Sloane Crescent, Edmonton

MLS® #E4441918

**\$599,900**

4 Bedroom, 3.50 Bathroom, 1,841 sqft

Single Family on 0.00 Acres

South Terwillegar, Edmonton, AB

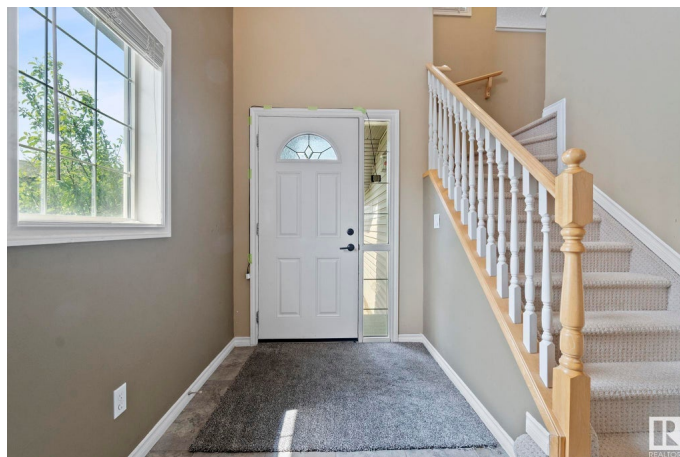
Stunning, fully finished 2-story, 4-bedroom, 4-bath home in the sought-after Southwest community of South Terwilliger. Located on a quiet cul-de-sac, this spacious home features an open-concept main floor. Living room with gas fireplace, a chef's kitchen with stainless steel appliances, a large island with storage, and a pantry. 2 pc bath and mudroom/laundry with garage access complete the main. Upstairs, enjoy a massive bonus room, a primary suite with a 5-pc ensuite and walk-in closet, two additional bedrooms, and a 4-pc bath. The fully finished basement offers a great room with wet bar, 4th bedroom, and 3-pc bath, plus a utility room with a second washer/dryer. Built-in sound system throughout. The nicely landscaped east/south-facing backyard features a large deck with gas bbq hookup, gazebo and a shed. Double attached garage, parking pad and street parking. Close to top-rated schools, parks, shopping, public transit, and major roadways, all while being tucked away on a quiet street.

Built in 2007

### Essential Information

MLS® # E4441918

Price \$599,900



Bedrooms	4
Bathrooms	3.50
Full Baths	3
Half Baths	1
Square Footage	1,841
Acres	0.00
Year Built	2007
Type	Single Family
Sub-Type	Detached Single Family
Style	2 Storey
Status	Active

### Community Information

Address	8438 Sloane Crescent
Area	Edmonton
Subdivision	South Terwillegar
City	Edmonton
County	ALBERTA
Province	AB
Postal Code	T6R 0L3

### Amenities

Amenities	On Street Parking, Deck, Wet Bar, Natural Gas BBQ Hookup
Parking	Double Garage Attached, Front Drive Access, Parking Pad Cement/Paved

### Interior

Interior Features	ensuite bathroom
Appliances	Dishwasher-Built-In, Dryer, Garage Control, Garage Opener, Microwave Hood Fan, Refrigerator, Storage Shed, Stove-Electric, Washer, Window Coverings
Heating	Forced Air-1, Natural Gas
Fireplace	Yes
Fireplaces	Glass Door, Mantel
Stories	3
Has Basement	Yes
Basement	Full, Finished

### Exterior

Exterior	Wood, Brick, Vinyl
Exterior Features	Corner Lot, Cul-De-Sac, Fenced, Flat Site, Golf Nearby, Landscaped, Playground Nearby, Public Transportation, Schools, Shopping Nearby, See Remarks
Roof	Asphalt Shingles
Construction	Wood, Brick, Vinyl
Foundation	Concrete Perimeter

**Additional Information**

Date Listed	June 12th, 2025
Days on Market	4
Zoning	Zone 14

DATA IS DEEMED RELIABLE BUT IS NOT GUARANTEED ACCURATE BY THE REALTORS® ASSOCIATION OF EDMONTON. COPYRIGHT 2025 BY THE REALTORS® ASSOCIATION OF EDMONTON. ALL RIGHTS RESERVED.Trademarks are owned or controlled by the Canadian Real Estate Association (CREA) and identify real estate professionals who are members of CREA (REALTOR®, REALTORS®) and/or the quality of services they provide (MLS®, Multiple Listing Service®)

Listing information last updated on June 15th, 2025 at 10:02pm MDT