

\$208,000 - 10707 102 Avenue, Edmonton

MLS® #E4439848

\$208,000

2 Bedroom, 1.00 Bathroom, 738 sqft

Condo / Townhouse on 0.00 Acres

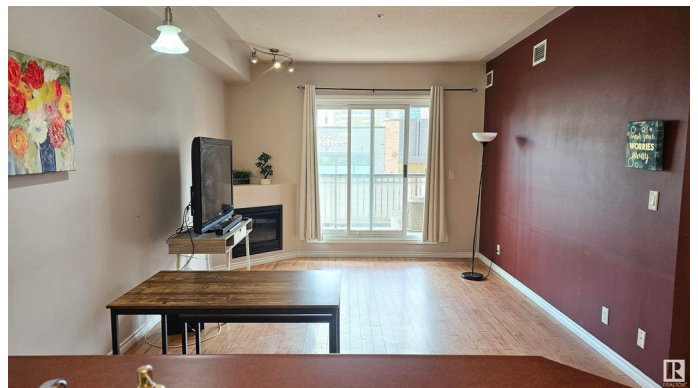
Downtown (Edmonton), Edmonton, AB

Live in heart of downtown in this super modern 2 bdrm condo in The Monaco! Steps to Macewan University, new lrt station and the new arena and Jasper Ave. Features include a modern maple kitchen overlooking dining and living rooms with cozy fireplace. Nice size balcony for BBQ'S. Master bdrm with modern décor and walk in closet. Cozy 2nd bdrm. Modern 4 pce bath with deep tub, stacked laundry and front closet complete unit. Floors are quality neutral wood laminate and ceramic tile. Additional features include air conditioning and an underground parking stall. Unique complex with open air common hallways!

Built in 2002

Essential Information

| | |
|----------------|------------------------|
| MLS® # | E4439848 |
| Price | \$208,000 |
| Bedrooms | 2 |
| Bathrooms | 1.00 |
| Full Baths | 1 |
| Square Footage | 738 |
| Acres | 0.00 |
| Year Built | 2002 |
| Type | Condo / Townhouse |
| Sub-Type | Lowrise Apartment |
| Style | Single Level Apartment |



| | |
|--------|--------|
| Status | Active |
|--------|--------|

Community Information

| | |
|-------------|---------------------|
| Address | 10707 102 Avenue |
| Area | Edmonton |
| Subdivision | Downtown (Edmonton) |
| City | Edmonton |
| County | ALBERTA |
| Province | AB |
| Postal Code | T5J 5E4 |

Amenities

| | |
|-----------|--|
| Amenities | No Animal Home, No Smoking Home, Parking-Visitor, Secured Parking, Security Door |
| Parking | Heated, Underground |

Interior

| | |
|--------------|--|
| Appliances | Dishwasher-Built-In, Dryer, Refrigerator, Stove-Electric, Washer, Window Coverings |
| Heating | Hot Water, Natural Gas |
| # of Stories | 4 |
| Stories | 1 |
| Has Basement | Yes |
| Basement | None, No Basement |

Exterior

| | |
|-------------------|---|
| Exterior | Wood, Stucco |
| Exterior Features | Public Transportation, Schools, Shopping Nearby |
| Roof | Asphalt Shingles |
| Construction | Wood, Stucco |
| Foundation | Concrete Perimeter |

Additional Information

| | |
|----------------|----------------|
| Date Listed | June 2nd, 2025 |
| Days on Market | 14 |
| Zoning | Zone 12 |
| Condo Fee | \$463 |

DATA IS DEEMED RELIABLE BUT IS NOT GUARANTEED ACCURATE BY THE REALTORS® ASSOCIATION OF EDMONTON. COPYRIGHT 2025 BY THE REALTORS® ASSOCIATION OF EDMONTON. ALL RIGHTS RESERVED.Trademarks are owned or controlled by the Canadian Real Estate Association (CREA) and identify real

estate professionals who are members of CREA (REALTOR®®, REALTORS®®) and/or the quality of services they provide (MLS®®, Multiple Listing Service®®)

Listing information last updated on June 16th, 2025 at 6:17am MDT