

\$624,900 - 22810 95a Avenue, Edmonton

MLS® #E4436087

\$624,900

3 Bedroom, 3.50 Bathroom, 2,034 sqft

Single Family on 0.00 Acres

Secord, Edmonton, AB

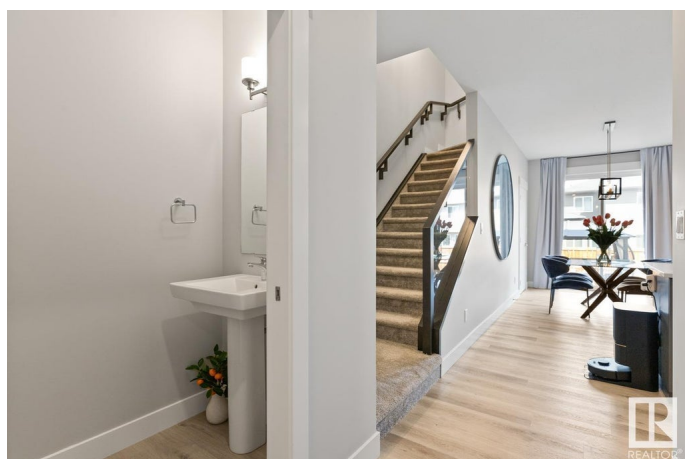
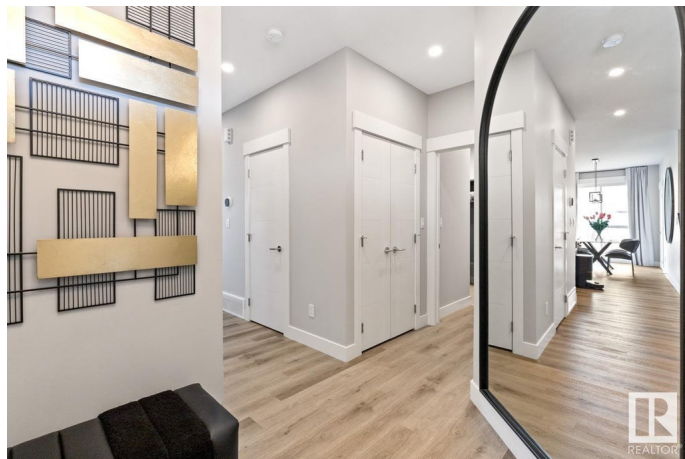
Welcome to this stunning custom-built home in the sought-after community of Secord! This beautifully designed 3-bedroom, 2.5-bath home is filled with high-end upgrades and thoughtful touches throughout. The main floor features a bright, open-concept layout ideal for both daily living and entertaining. The chef-inspired kitchen boasts upgraded stainless steel appliances, quartz countertops, a large island, a spacious walk-in pantry, and ample cabinet space. A massive custom fireplace anchors the spacious living area, while sleek glass railings add a modern, open feel. Upstairs, enjoy a large bonus room with tray ceilings, a vaulted-ceiling primary suite with a spa-like ensuite, two generous guest bedrooms, and the convenience of second-floor laundry. The basement offers a wide-open layout with endless possibilities—perfect for a home gym, media room, or additional living space. Conveniently located near schools, grocery stores, West Edmonton Mall, and a future recreation centre! WELCOME HOME

Built in 2022

Essential Information

MLS® # E4436087

Price \$624,900



Bedrooms	3
Bathrooms	3.50
Full Baths	3
Half Baths	1
Square Footage	2,034
Acres	0.00
Year Built	2022
Type	Single Family
Sub-Type	Detached Single Family
Style	2 Storey
Status	Active

Community Information

Address	22810 95a Avenue
Area	Edmonton
Subdivision	Secord
City	Edmonton
County	ALBERTA
Province	AB
Postal Code	T5T 7H5

Amenities

Amenities	Ceiling 9 ft., Gazebo, Patio
Parking	Double Garage Attached

Interior

Interior Features	ensuite bathroom
Appliances	Dishwasher-Built-In, Dryer, Garage Opener, Hood Fan, Refrigerator, Stove-Electric, Washer, Window Coverings
Heating	Forced Air-1, Natural Gas
Stories	3
Has Basement	Yes
Basement	Full, Finished

Exterior

Exterior	Wood, Vinyl
Exterior Features	Fenced, Golf Nearby, Landscaped, Playground Nearby, Public Transportation, Schools, Shopping Nearby
Roof	Asphalt Shingles

Construction	Wood, Vinyl
Foundation	Concrete Perimeter

Additional Information

Date Listed	May 13th, 2025
Days on Market	1
Zoning	Zone 58

DATA IS DEEMED RELIABLE BUT IS NOT GUARANTEED ACCURATE BY THE REALTORS® ASSOCIATION OF EDMONTON. COPYRIGHT 2025 BY THE REALTORS® ASSOCIATION OF EDMONTON. ALL RIGHTS RESERVED.Trademarks are owned or controlled by the Canadian Real Estate Association (CREA) and identify real estate professionals who are members of CREA (REALTOR®, REALTORS®) and/or the quality of services they provide (MLS®, Multiple Listing Service®)

Listing information last updated on May 14th, 2025 at 8:02pm MDT