

## \$1,098,000 - 10725 & 10727 113 Street, Edmonton

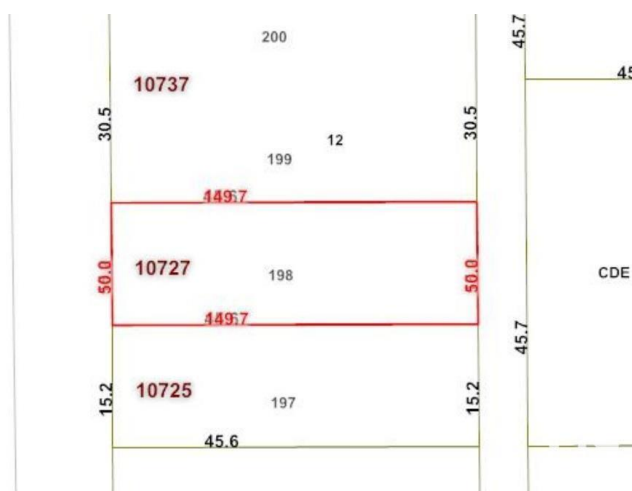
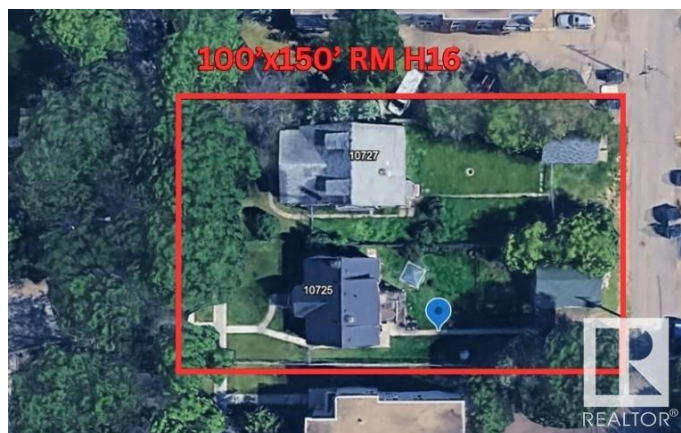
MLS® #E4435667

**\$1,098,000**

0 Bedroom, 0.00 Bathroom,  
Multi-Family Commercial on 0.00 Acres

Queen Mary Park, Edmonton, AB

100'x150' RM H16 Medium Scale Residential zoned lots in Queen Mary Park. Great potential for CMHC MLI "apartment building, 4plex w/ legal basement suites, skinnies, lots of opportunities to maximize your investment. This location is excellent for future redevelopment, close to amenities, public transit, LRT, minutes from downtown & in a neighbourhood where other redevelopment is already happening & more being planned all the time. Take advantage of the City encouraging higher density & development & secure your next project! One home has current rental income & long term tenants



Built in 1927

### Essential Information

MLS® #	E4435667
Price	\$1,098,000
Bathrooms	0.00
Acres	0.00
Year Built	1927
Type	Multi-Family Commercial
Status	Active

### Community Information

Address	10725 & 10727 113 Street
Area	Edmonton

Subdivision	Queen Mary Park
City	Edmonton
County	ALBERTA
Province	AB
Postal Code	T5H 3H9

### Exterior

Exterior	Wood Frame
Construction	Wood Frame

### Additional Information

Date Listed	May 9th, 2025
Days on Market	3
Zoning	Zone 08

DATA IS DEEMED RELIABLE BUT IS NOT GUARANTEED ACCURATE BY THE REALTORS® ASSOCIATION OF EDMONTON. COPYRIGHT 2025 BY THE REALTORS® ASSOCIATION OF EDMONTON. ALL RIGHTS RESERVED. Trademarks are owned or controlled by the Canadian Real Estate Association (CREA) and identify real estate professionals who are members of CREA (REALTOR®, REALTORS®) and/or the quality of services they provide (MLS®, Multiple Listing Service®)

Listing information last updated on May 12th, 2025 at 1:17pm MDT