

## \$179,900 - 108 7805 159 Street, Edmonton

MLS® #E4433248

**\$179,900**

2 Bedroom, 1.50 Bathroom, 1,023 sqft  
Condo / Townhouse on 0.00 Acres

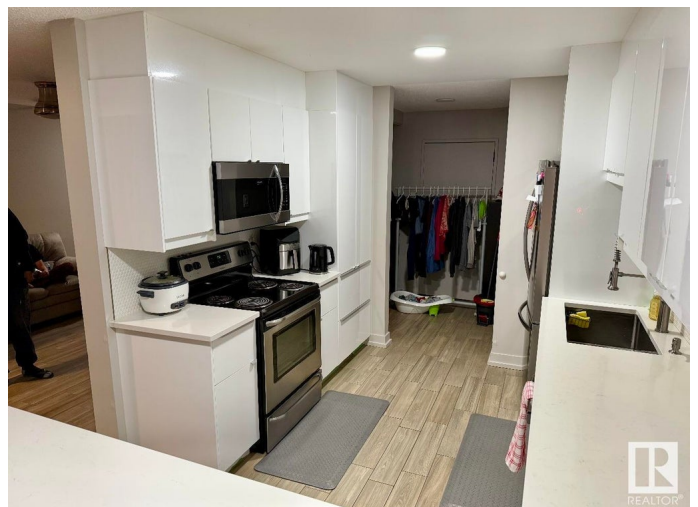
Patricia Heights, Edmonton, AB

Beautifully renovated 2 bedroom, 1 and a half bathrooms in prestigious Patricia Heights. Private and sunny fenced patio. Excellent location in the complex (3 fenced patios down from West Entrance area.) Spacious, treed grounds. 1 electrified stall is included and others can be rented for \$35. month. Lovely, spacious white kitchen with eat at breakfast bar. Stainless appliances and tons of cabinets. Great half bath on main level with the perfectly sized sink for washing the little pets! Main floor dining room fits a large table. Two spacious bedrooms up with a full beautifully renovated bathroom. Amazing mirrored medicine cabinets holds tons of stuff! Vinyl sheet flooring upper level, Composite tile main floor and in bathrooms. Master bedroom has a large walk in closet. This is an excellent complex close to excellent schools, shopping, restaurants and hospital. Pets with board approval.

Built in 1971

### Essential Information

MLS® #	E4433248
Price	\$179,900
Bedrooms	2
Bathrooms	1.50
Full Baths	1



Half Baths	1
Square Footage	1,023
Acres	0.00
Year Built	1971
Type	Condo / Townhouse
Sub-Type	Townhouse
Style	2 Storey
Status	Active

### Community Information

Address	108 7805 159 Street
Area	Edmonton
Subdivision	Patricia Heights
City	Edmonton
County	ALBERTA
Province	AB
Postal Code	T5R 2E1

### Amenities

Amenities	See Remarks
Parking	Stall

### Interior

Appliances	Dishwasher-Built-In, Fan-Ceiling, Oven-Microwave, Refrigerator, Stove-Electric
Heating	Baseboard, Hot Water, Natural Gas
Stories	2
Has Basement	Yes
Basement	None, No Basement

### Exterior

Exterior	Wood, Brick, Vinyl
Exterior Features	Landscaped, No Through Road, Public Transportation, Schools, Shopping Nearby, See Remarks
Roof	Asphalt Shingles
Construction	Wood, Brick, Vinyl
Foundation	Concrete Perimeter

### Additional Information

Date Listed	April 28th, 2025
Days on Market	2
Zoning	Zone 22
Condo Fee	\$556

DATA IS DEEMED RELIABLE BUT IS NOT GUARANTEED ACCURATE BY THE REALTORS® ASSOCIATION OF EDMONTON. COPYRIGHT 2025 BY THE REALTORS® ASSOCIATION OF EDMONTON. ALL RIGHTS RESERVED. Trademarks are owned or controlled by the Canadian Real Estate Association (CREA) and identify real estate professionals who are members of CREA (REALTOR®, REALTORS®) and/or the quality of services they provide (MLS®, Multiple Listing Service®)

Listing information last updated on April 30th, 2025 at 8:47am MDT