

\$395,000 - 105 Kiniski Crescent, Edmonton

MLS® #E4431170

\$395,000

4 Bedroom, 2.50 Bathroom, 1,187 sqft

Single Family on 0.00 Acres

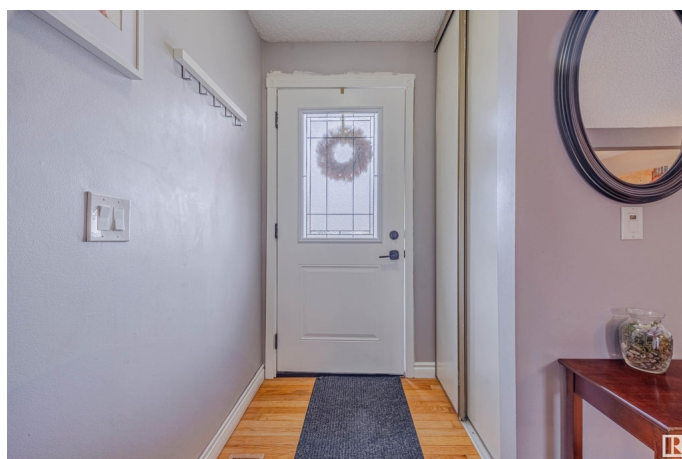
Kiniski Gardens, Edmonton, AB

Welcome to this beautifully maintained, fully finished 2-story gem! 1,200 SqFt of well-designed living space, this home offers comfort, functionality, & a perfect setting for family life. Upstairs, you'll find 3 generously sized bed, including a spacious primary complete w/ a walk-in closet and a full 4-piece bath. The bright & inviting living room features a large bay window that fills the space w/ natural light. Main floor also includes a well-appointed kitchen with plenty of counter space, convenient half bath, overlooking the beautifully landscaped backyard. Fully finished basement expands your living space with a large rec room, 4th bed, additional storage, & full 4-piece bath—ideal for guests or a growing family. Enjoy outdoor living in the private backyard, leading to your detached double car garage adds convenience & value. Close to schools, parks, shopping, and public transit, this home is the total package for families or first-time buyers.

Built in 1981

Essential Information

MLS® #	E4431170
Price	\$395,000
Bedrooms	4
Bathrooms	2.50



Full Baths	2
Half Baths	1
Square Footage	1,187
Acres	0.00
Year Built	1981
Type	Single Family
Sub-Type	Detached Single Family
Style	2 Storey
Status	Active

Community Information

Address	105 Kiniski Crescent
Area	Edmonton
Subdivision	Kiniski Gardens
City	Edmonton
County	ALBERTA
Province	AB
Postal Code	T5J 3N6

Amenities

Amenities	Off Street Parking, Low Flw/Dual Flush Toilet, No Smoking Home
Parking	Double Garage Detached

Interior

Appliances	Dishwasher-Built-In, Dryer, Garage Control, Garage Opener, Hood Fan, Refrigerator, Stove-Electric, Washer
Heating	Forced Air-1, Natural Gas
Stories	3
Has Basement	Yes
Basement	Full, Finished

Exterior

Exterior	Wood, Vinyl
Exterior Features	Back Lane, Fenced, Golf Nearby, Landscaped, Low Maintenance Landscape, Playground Nearby, Public Transportation, Schools, Shopping Nearby
Roof	Asphalt Shingles
Construction	Wood, Vinyl
Foundation	Concrete Perimeter

Additional Information

Date Listed April 16th, 2025
Days on Market 14
Zoning Zone 29

DATA IS DEEMED RELIABLE BUT IS NOT GUARANTEED ACCURATE BY THE REALTORS® ASSOCIATION OF EDMONTON. COPYRIGHT 2025 BY THE REALTORS® ASSOCIATION OF EDMONTON. ALL RIGHTS RESERVED.Trademarks are owned or controlled by the Canadian Real Estate Association (CREA) and identify real estate professionals who are members of CREA (REALTOR®, REALTORS®) and/or the quality of services they provide (MLS®, Multiple Listing Service®)
Listing information last updated on April 30th, 2025 at 9:17pm MDT