

\$424,900 - 8580 Cushing Place, Edmonton

MLS® #E4429645

\$424,900

3 Bedroom, 2.50 Bathroom, 1,487 sqft

Single Family on 0.00 Acres

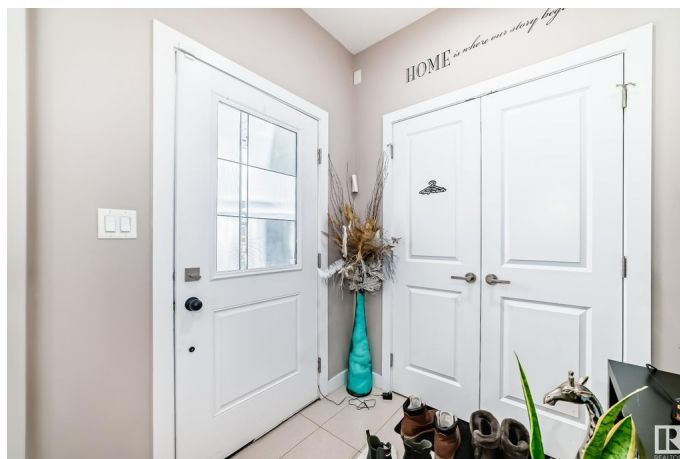
Chappelle Area, Edmonton, AB

Your home awaits in the vibrant community of Chappelle! This original-owner 3 bed, 2.5 bath half-duplex sits on a quiet street. Enjoy the bright open-concept main floor with a spacious living room, dining area, large kitchen, and convenient powder room. Upstairs offers a generous primary suite with a 4-piece ensuite and walk-in closet, plus two additional bedrooms, a full bathroom, laundry, and a cozy bonus room. The basement with side entry offers great potential for a future legal suite. Outside, relax on the spacious deck and enjoy the private yard—perfect for family fun or entertaining. Complete with a single attached garage and ideally located near parks, schools, and shopping. This home combines comfort, space, and future investment opportunity. Don't miss out!

Built in 2017

Essential Information

MLS® #	E4429645
Price	\$424,900
Bedrooms	3
Bathrooms	2.50
Full Baths	2
Half Baths	1
Square Footage	1,487
Acres	0.00



Year Built	2017
Type	Single Family
Sub-Type	Half Duplex
Style	2 Storey
Status	Active

Community Information

Address	8580 Cushing Place
Area	Edmonton
Subdivision	Chappelle Area
City	Edmonton
County	ALBERTA
Province	AB
Postal Code	T6W 3R4

Amenities

Amenities	No Smoking Home
Parking Spaces	2
Parking	Single Garage Attached

Interior

Interior Features	ensuite bathroom
Appliances	Dishwasher-Built-In, Refrigerator, Stove-Electric, Washer
Heating	Forced Air-1, Natural Gas
Stories	2
Has Basement	Yes
Basement	Full, Unfinished

Exterior

Exterior	Wood, Vinyl
Exterior Features	Fenced, Landscaped, Playground Nearby, Schools, Shopping Nearby
Roof	Asphalt Shingles
Construction	Wood, Vinyl
Foundation	Concrete Perimeter

Additional Information

Date Listed	April 8th, 2025
Days on Market	23
Zoning	Zone 55

DATA IS DEEMED RELIABLE BUT IS NOT GUARANTEED ACCURATE BY THE REALTORS® ASSOCIATION OF EDMONTON. COPYRIGHT 2025 BY THE REALTORS® ASSOCIATION OF EDMONTON. ALL RIGHTS RESERVED.Trademarks are owned or controlled by the Canadian Real Estate Association (CREA) and identify real estate professionals who are members of CREA (REALTOR®, REALTORS®) and/or the quality of services they provide (MLS®, Multiple Listing Service®)

Listing information last updated on May 1st, 2025 at 5:02am MDT