

\$142,900 - 101 1620 48 Street, Edmonton

MLS® #E4428947

\$142,900

2 Bedroom, 1.00 Bathroom, 867 sqft

Condo / Townhouse on 0.00 Acres

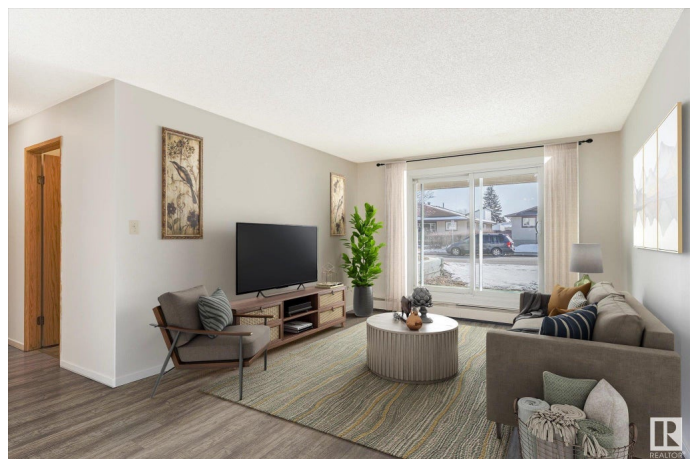
Pollard Meadows, Edmonton, AB

Renovated two bedroom main floor unit with in suite storage! Prime location near schools and steps away from the Pollard Meadows natural area. Laminate floors welcome you into this spacious floorplan. The chef in the family will fall in love with the updated white kitchen featuring quartz counters. Spacious dining area leads to the bright east facing living room that provides ample sunlight through the patio doors, a perfect spot to enjoy your morning coffee. The centrally located, renovated bathroom also has quartz counters and updated cabinetry. Eliminate storage problems as there is a large in suite storage room with built-in shelves to keep everything organized! Laundry room is nearby on the 2nd floor, but don't worry there is an elevator a few steps away. 1 surface parking stall is also included. Quick possession is possible!

Built in 1981

Essential Information

MLS® #	E4428947
Price	\$142,900
Bedrooms	2
Bathrooms	1.00
Full Baths	1
Square Footage	867
Acres	0.00



Year Built	1981
Type	Condo / Townhouse
Sub-Type	Lowrise Apartment
Style	Single Level Apartment
Status	Active

Community Information

Address	101 1620 48 Street
Area	Edmonton
Subdivision	Pollard Meadows
City	Edmonton
County	ALBERTA
Province	AB
Postal Code	T6L 5N9

Amenities

Amenities	Off Street Parking, On Street Parking, Intercom, Patio, Security Door
Parking Spaces	1
Parking	Stall

Interior

Appliances	Dishwasher-Built-In, Refrigerator, Stove-Electric
Heating	Baseboard, Hot Water, Natural Gas
# of Stories	3
Stories	1
Has Basement	Yes
Basement	None, No Basement

Exterior

Exterior	Wood, Stucco
Exterior Features	Flat Site, Landscaped, Park/Reserve, Playground Nearby, Public Transportation, Schools, Shopping Nearby
Roof	Asphalt Shingles
Construction	Wood, Stucco
Foundation	Concrete Perimeter

Additional Information

Date Listed	April 3rd, 2025
Days on Market	27

Zoning	Zone 29
Condo Fee	\$504

DATA IS DEEMED RELIABLE BUT IS NOT GUARANTEED ACCURATE BY THE REALTORS® ASSOCIATION OF EDMONTON. COPYRIGHT 2025 BY THE REALTORS® ASSOCIATION OF EDMONTON. ALL RIGHTS RESERVED. Trademarks are owned or controlled by the Canadian Real Estate Association (CREA) and identify real estate professionals who are members of CREA (REALTOR®, REALTORS®) and/or the quality of services they provide (MLS®, Multiple Listing Service®)

Listing information last updated on April 30th, 2025 at 6:17pm MDT