

## \$799,900 - 57 Lilac Bay, Spruce Grove

MLS® #E4427538

**\$799,900**

4 Bedroom, 3.00 Bathroom, 2,680 sqft

Single Family on 0.00 Acres

Stoneshire, Spruce Grove, AB

Welcome to this stunning 2680sq ft modern home featuring luxurious finishes and an OVERSIZED TRIPLE-CAR garage. 4 BEDROOMS and 3 FULL Bathrooms.

Designed for style and functionality, this home offers an open-to-below living room with soaring ceilings, large windows, and an elegant feature wall with an electric fireplace.

Extended kitchen with two-toned cabinets, quartz counter tops and a walk-through pantry.

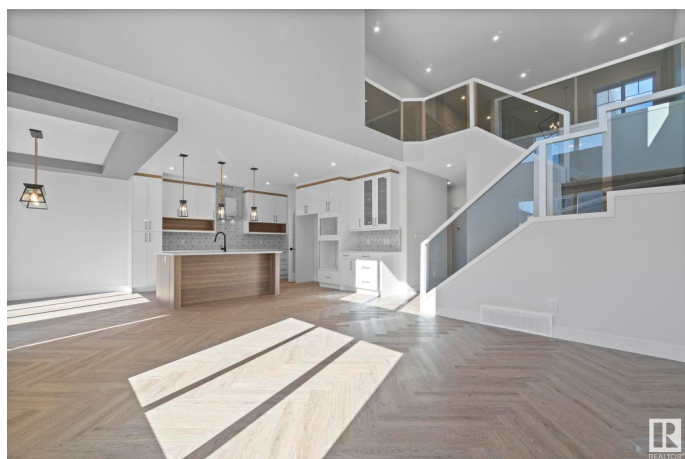
Main floor den/bedroom with full bathroom. A spacious mudroom with plenty of space for storage. Upstairs, the primary suite is a private retreat, complete with a spa-like 5-piece ensuite and a generous walk-in closet. Two additional bedrooms, a bonus room, an upstairs laundry room, and a full bathroom complete this floor. SEPARATE SIDE ENTRANCE to the unfinished basement, awaiting your personal touch. Premium lighting package, glass railing, upgraded flooring and MDF shelving throughout. Good sized lot complete with a deck. Close to all amenities.

Built in 2025

### Essential Information

MLS® # E4427538

Price \$799,900



Bedrooms	4
Bathrooms	3.00
Full Baths	3
Square Footage	2,680
Acres	0.00
Year Built	2025
Type	Single Family
Sub-Type	Detached Single Family
Style	2 Storey
Status	Active

### Community Information

Address	57 Lilac Bay
Area	Spruce Grove
Subdivision	Stoneshire
City	Spruce Grove
County	ALBERTA
Province	AB
Postal Code	T7X 2H5

### Amenities

Amenities	Ceiling 10 ft., Ceiling 9 ft., Deck, Parking-Extra
Parking Spaces	6
Parking	Double Garage Attached, Triple Garage Attached

### Interior

Interior Features	ensuite bathroom
Appliances	Garage Control, Garage Opener, Hood Fan
Heating	Forced Air-1, Natural Gas
Fireplace	Yes
Fireplaces	Wall Mount
Stories	2
Has Suite	Yes
Has Basement	Yes
Basement	Full, Unfinished

### Exterior

Exterior	Wood, Vinyl
Exterior Features	Airport Nearby, Fenced, Golf Nearby, Level Land, Playground Nearby,

	Public Transportation, Schools, Shopping Nearby
Roof	Asphalt Shingles
Construction	Wood, Vinyl
Foundation	Concrete Perimeter

### **Additional Information**

Date Listed	March 26th, 2025
Days on Market	36
Zoning	Zone 91

DATA IS DEEMED RELIABLE BUT IS NOT GUARANTEED ACCURATE BY THE REALTORS® ASSOCIATION OF EDMONTON. COPYRIGHT 2025 BY THE REALTORS® ASSOCIATION OF EDMONTON. ALL RIGHTS RESERVED. Trademarks are owned or controlled by the Canadian Real Estate Association (CREA) and identify real estate professionals who are members of CREA (REALTOR®, REALTORS®) and/or the quality of services they provide (MLS®, Multiple Listing Service®)

Listing information last updated on April 30th, 2025 at 10:47pm MDT