

## \$689,000 - 10018 147 Street Nw, Edmonton

MLS® #E4350226

### \$689,000

5 Bedroom, 3.00 Bathroom, 2,044 sqft  
Single Family on 0.17 Acres

Crestwood, Edmonton, AB

CRESTWOOD large story&1/2 home with beautiful West back yard perfect to live in or plan a new build. Oversized double garage, large deck, Elm treed boulevard, 1/2 block from McKenzie Ravine. Main floor kitchen has granite countertops, six burner gas stove, electric oven, sink with prep sink, refrigerator, built in dishwasher. Main floor den off front door, living room with wood burning fireplace, dining room, 2 bedrooms and a full bath. Master Suite is secluded on the second floor with large ensuite, double vanities, walk-in shower plus a balcony that overlooks the back yard (carpet in master has been replaced with vinyl plank). Basement has 2 bedrooms and 1/2 bath, family room, laundry and storage area. Sump pump and large egress windows in basement have been added. Long possession is available.

Built in 1978

### Essential Information

MLS® #	E4350226
Price	\$689,000
Bedrooms	5
Bathrooms	3.00
Full Baths	3
Square Footage	2,044
Acres	0.17



Year Built	1978
Type	Single Family
Sub-Type	Residential Detached Single Family
Style	1 and Half Storey

### Community Information

Address	10018 147 Street Nw
Area	Edmonton
Subdivision	Crestwood
City	Edmonton
County	ALBERTA
Province	AB
Postal Code	T5N 3B7

### Amenities

Amenities	Deck, Detectors Smoke, Hot Water Natural Gas, No Smoking Home, R.V. Storage
Features	Deck, Detectors Smoke, Hot Water Natural Gas, No Smoking Home, R.V. Storage
Parking Spaces	4
Parking	Double Garage Detached
# of Garages	2

### Interior

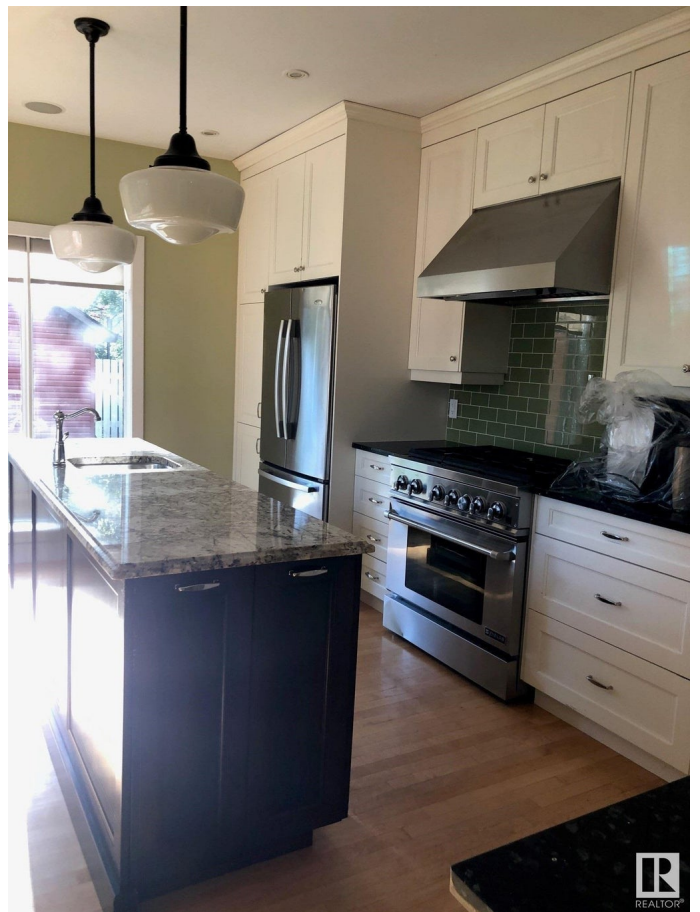
Interior	Hardwood, Laminate Flooring
Interior Features	Oven-Built-In, Refrigerator, Stove-Countertop Gas, Washer, Dishwasher-Built-In, Dryer, Garage Control, Garage Opener, Hood Fan
Heating	Forced Air-1
Fireplace	Yes
Fireplaces	Wood, Brick Facing
# of Stories	3
Has Basement	Yes
Basement	Fully Finished, Full

### Exterior

Exterior	Wood
Exterior Features	Back Lane, Fenced, Flat Site, Playground Nearby, Public Transportation, Schools
Construction	Concrete

## Additional Information

Date Listed                July 15th, 2023



DATA IS DEEMED RELIABLE BUT IS NOT GUARANTEED ACCURATE BY THE REALTORS® ASSOCIATION OF EDMONTON. COPYRIGHT 2024 BY THE REALTORS® ASSOCIATION OF EDMONTON. ALL RIGHTS RESERVED. Trademarks are owned or controlled by the Canadian Real Estate Association (CREA) and identify real estate professionals who are members of CREA (REALTOR®, REALTORS®) and/or the quality of services they provide (MLS®, Multiple Listing Service®)

Listing information last updated on May 15th, 2024 at 8:46pm MDT